

# TRANSCEND

overbed table



**HEALTHCARE**  
FURNISHINGS

# TRANSCEND OVERBED TABLE

- Height Adjustment Mechanism: Gas Cylinder mechanism with infinite height positioning
- Weight Capacity: 25 lbs
- Height Range: 29.5" - 44.5", infinite positioning
- Top Size: 18" x 32" x 3/4" thick
- Top Construction: (Model No. ST180-TH) Seamless thermofoil laminate over 3/4" engineered MDF, surface recessed for spill containment

- Top Construction: (Model No. ST180-PR) 1" thick particle board substrate, surfaced with high-pressure laminate and edged with seamless poly-resin raised edge
- Column Construction: Anodized aluminum extrusion with internal gas cylinder mechanism
- Base Construction: 14-gauge steel base overlaid with molded high-impact ABS shroud. U-base is compatible with late-model hospital beds and stretchers

## STATEMENT OF LINE



Overbed Table  
Model ST180-TH  
with Thermofoil spill top  
W 32  
D 18  
H 30/45



Overbed Table  
Model ST180-PR  
with Poly-resin spill top  
W 32  
D 18  
H 30/45

## TOP FINISH SELECTION



HARDROCK  
MAPLE (HM)



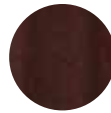
CANDLELIGHT  
(CL)



RUSTIC CHERRY  
(RC)



SUMMER  
FLAME (SF)



MAHOGANY  
(MA)



CHERRY  
BLOSSOM (CB)



GRENADA  
(GR)



CHOCOLATE  
(CH)

## BASE/COLUMN POWDERCOAT FINISH OPTIONS



BLACK



SILVER



ALMOND



CHROME